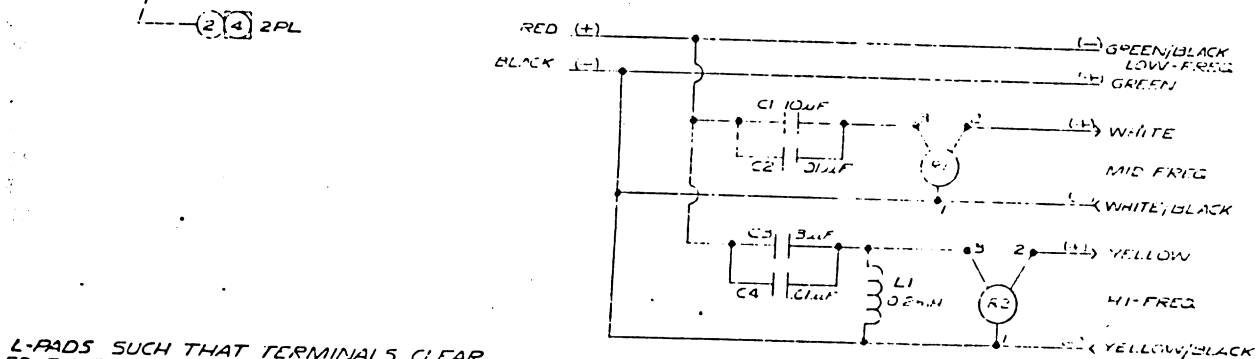
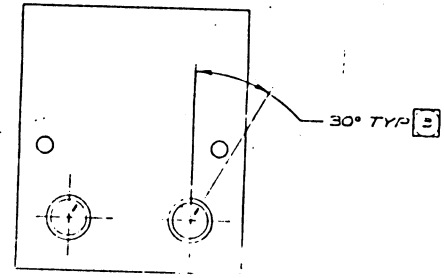
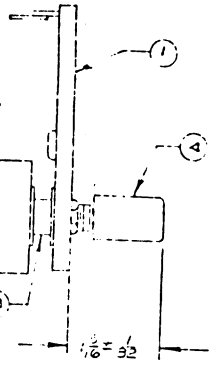
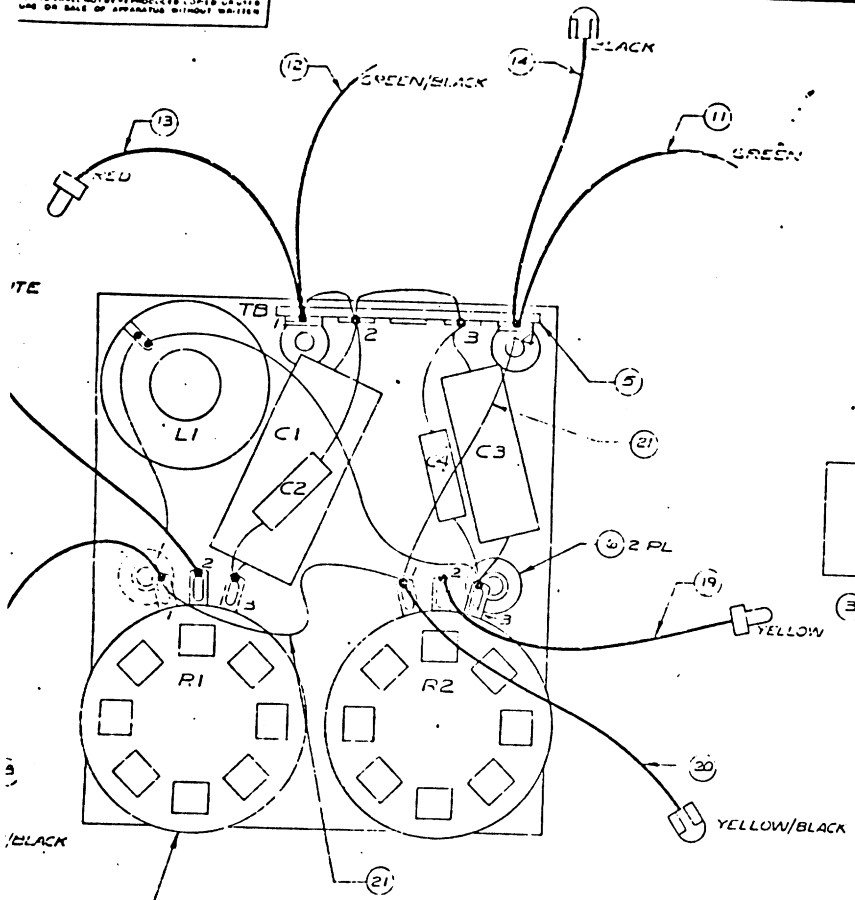


STANDARD AND THE PROPERTY OF JBL. REPRODUCTION OF THIS DRAWING WITHOUT THE WRITTEN PERMISSION OF JBL IS PROHIBITED. THIS DRAWING IS NOT TO BE USED OR SAID OF APPROVED WITHOUT WRITTEN

6 5 4 3 2 1

REVISIONS						
CHG	LIB	DESCRIPTION	DRFT	CHK	DATE	APPR
A					1-27-66	
B		ITEM 4 W/ 2 PL			3-10-66	
C		SEC DER			5-11-66	



SCHEMATIC G.63324-01

L-PADS SUCH THAT TERMINALS CLEAR ED RIVET HOLES.  
 INSTALLING ITEM 4 TURN SHAFT OF ITEM 2 COUNTERCLOCKWISE AND INSTALL IN POSITION SHOWN.  
 VIS 5, 7, 8, & 10 TO ITEM 1 USING ITEM 15.  
 LIST SEE DRAWING G.6324-02.  
 VISE SPECIFIED)

3112D

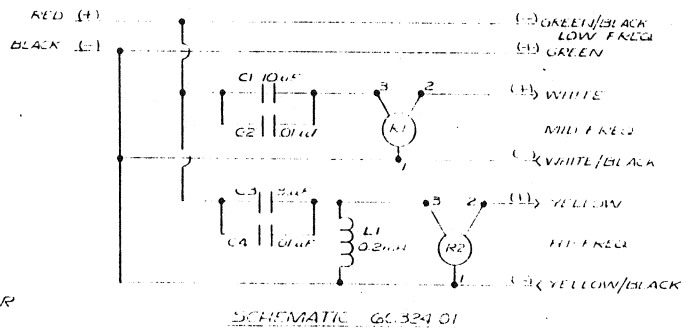
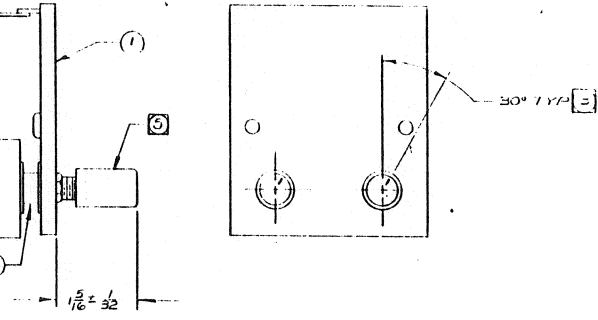
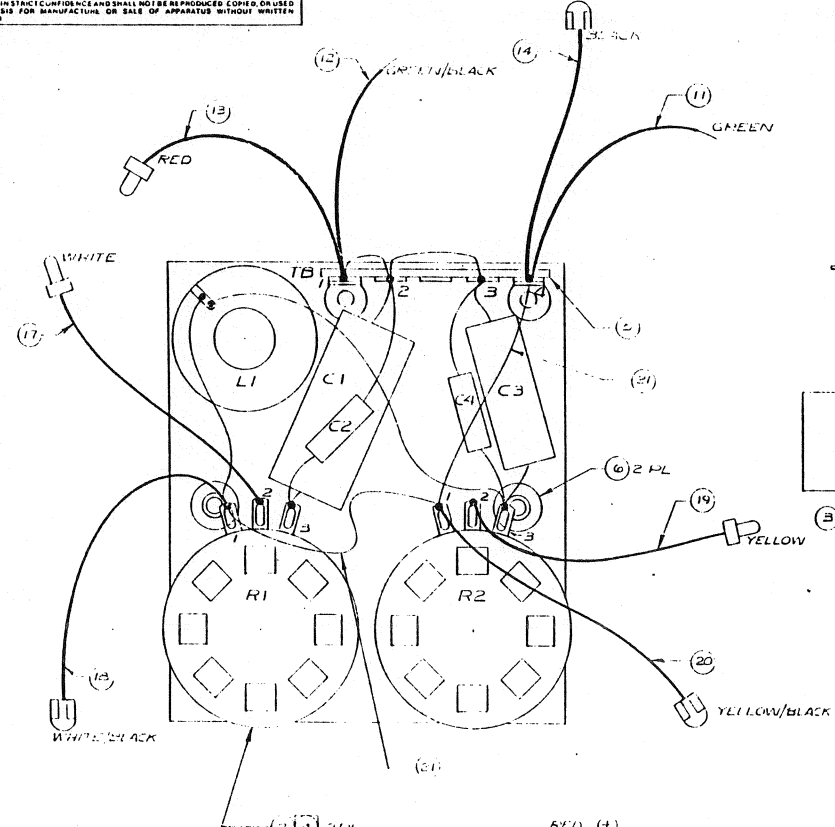
21	11872	WIRE 22 GA BLACK	2	EA.
20	57173-54	WIRE/CONN ASSY (YEL/BLK)	1	FEMALE
19	57173-53	WIRE/CONN ASSY (YEL)	1	MALE
18	57173-32	WIRE/CONN ASSY (WHT/BLK)	1	FEMALE
17	57173-51	WIRE/CONN ASSY (WHT)	1	MALE
16	294745	SOLDER		.0005
15	355694	JETMELT		.01
14	57173-66	WIRE 18 AWG BLACK	1.5	FT
13	57173-65	WIRE 18 AWG RED	1.5	FT
12	56649	WIRE 18 AWG GRN/BLACK	2	FT
11	56616	WIRE 18 AWG GRN	2	FT
10	62029-02	INDUCTOR 2mH	1	LI
9	61098	CAPACITOR 0.1uF	2	C2, C4
8	5590-0300	CAPACITOR 3uF	1	C3
7	50992-0K0	CAPACITOR 10uF	1	C1
6	51204	THREADED RIVET	2	
5	53498	TERMINAL STRIP	1	TB
4	52908	KNOB	2	
3	57814	SPACER	2	.250 THK
2	10285	L-PAD 8 OHM	2	R1, R2
1	57059	MOUNTING BOARD	1	

ITEM	PART NO.	DESCRIPTION	QTY	REMARKS
BILL OF MATERIAL				
UNLESS OTHERWISE SPECIFIED DIMENSIONS ARE IN INCHES				
FRACTIONAL DIMENSIONS TO 1/32				
TOLERANCES UNLESS OTHERWISE SPECIFIED ANGULAR				
FRACTIONAL DIMENSIONS TO 1/32				
ALL DIMENSIONS ARE FINISHED DIMENSIONS				
DO NOT SCALE DRAWING				
MATERIAL		JBL Incorporated A Harman International Company Harbor Drive, Columbia, SC 29204 USA		
FINISH		TITLE MFD ITEM 3112D		
MODEL/VOID CO.		DATE 1-27-66		
DRAWN		APPR D		
CHECKED		DATE 1-27-66		
DESIGNED		DATE 1-27-66		
SCALE		DATE 1-27-66		

THESE DRAWINGS AND SPECIFICATIONS ARE THE PROPERTY OF JBL INCORPORATED. THEY ARE TO BE KEPT CONFIDENTIAL AND SHALL NOT BE REPRODUCED, COPIED, OR USED AS THE BASIS FOR MANUFACTURE OR SALE OF APPARATUS WITHOUT WRITTEN PERMISSION.

PART NO	REV	DESCRIPTION	REMARK
66324	D	NETWORK 312D	MAKE IN HOUSE, SEE BOM
66324-0065	B	NETWORK 312D	PURCHASED/NO KNOB
66324-0065	A	NETWORK 312D	66324-0060 W/KNOB

REVISIONS						
CHG	LTR	DESCRIPTION	DRFT	CHK	DATE	APPR
1	A	REV FOR P/N 1	25	A	1-27-86	
2	B	ITEM 21 WIRE 22 GA 22 GA	25	R	5-13-86	
3	C	SEE DETAIL	25	E	5-13-86	
4	D	RELEASE 00060	25	C	10-1-86	
5	E	RELEASE - 0065 - 0060 - 011721	25	H	1-29-88	
		KNOB: 52908, WY 2				



- 5 INSTALL KNOB P/N 52908, 2 PLACES.
- 4 ORIENT L-PADS SUCH THAT TERMINALS CLEAR THREADED RIVET HOLES
- 3 BEFORE INSTALLING ITEM 4 TURN SHAFT OF ITEM 2 COUNTER CLOCKWISE AND INSTALL IN POSITION SHOWN.

2 BAND ITEMS 5, 7, 8, & 10 TO ITEM 1 USING ITEM 11  
 1 FOR WIRE LIST SEE DRAWING 66324-00.

NOTES: (UNLESS OTHERWISE SPECIFIED)

ITEM	PART NO.	DESCRIPTION	QTY	REMARKS
21	11872	WIRE 22 GA BLACK	2	FA.
20	57173-54	WIRE/CONN ASSY (YELLOW/BLACK)	1	FEAMLI
19	57173-55	WIRE/CONN ASSY (YELLOW)	1	MALE
18	57173-52	WIRE/CONN ASSY (WHITE/BLACK)	1	FEAMLI
17	57173-51	WIRE/CONN ASSY (WHITE)	1	MALE
16	294745	SOLDER	1	0005
15	65684	STEMLET	01	
14	57173-66	WIRE 18 AWG BLACK	10	11
13	57173-65	WIRE 18 AWG RED	15	11
12	56649	WIRE 18 AWG GRN/BLK	2	FT
11	56616	WIRE 18 AWG GRN	2	FT
10	62629-02	INDUCTOR 2mH	1	L1
9	67093	CAPACITOR 0.01uF	2	C2, C4
8	69990-03X0	CAPACITOR 3uF	1	C3
7	69990-000	CAPACITOR 10uF	1	C1
6	51204	THREADED RIVET	2	
5	53493	TERMINAL STRIP	1	7B
4				
3	57314	SPACER	2	250 THK
2	10285	L-PAD 8 OHM	3	R1, R2
1	67059	MOUNTING BOARD	1	

312D

BILL OF MATERIAL		MATERIAL	
UNLESS OTHERWISE SPECIFIED DIMENSIONS ARE IN MILLIMETERS	UNLESS OTHERWISE SPECIFIED DIMENSIONS ARE IN INCHES	FINISH	PROCESS
SMALL SHARP EDGES 0.05mm	SMALL SHARP EDGES 0.005"		
TOLERANCES (UNLESS OTHERWISE SPECIFIED)	TOLERANCES (UNLESS OTHERWISE SPECIFIED)		
0.001" ± 0.001"	0.001" ± 0.001"		
0.002" ± 0.002"	0.002" ± 0.002"		
0.005" ± 0.005"	0.005" ± 0.005"		
FRACTIONAL DIMENSIONS ± 1/100"	FRACTIONAL DIMENSIONS ± 1/100"		
ALL DIMENSIONS ARE FINISHED DIMENSIONS	ALL DIMENSIONS ARE FINISHED DIMENSIONS		
DO NOT SCALE DRAWING	DO NOT SCALE DRAWING		